



EUROCAVE

EUROCAVE 



EUROCAVE 
Creator of the wine cabinet

EuroCave, creator of wine cabinets and cellars, offers long term, premium solutions for wine preservation and service that respect the winemaker's intentions and enable faithful communication of these same intentions to demanding and discerning consumers.

The art of preservation and service contributes to enhancing the passionate experience related to wine, and is a part of the French art of living, synonymous with refinement and excellence.

Today, bolstered by a powerful network, a team of passionate advisors and a high-performance production plant, the brand can be found all over the world.

Cultivating excellence, EuroCave is the brand favoured by dedicated amateurs and the leading wine waiters in the most prestigious restaurants alike.



Our values

*
Page 4

*Our wine
cabinets*

*
Page 18

*Our
“Wine tasting”
range*

*
Page 76



*Our
cellar
layouts*

*
Page 82

*Our Cigar
Humidor*

*
Page 94

Our services

*
Page 98

Wine *is a heritage*

...

For the creation of a resource laden with history, EuroCave has adapted, technologies have changed, and aesthetics have mirrored trends, but the brand has always been dedicated to the enhancement of wine.

The culture of wine starts in the vineyard. The next steps are harvesting, the selection of grapes, and maturing.

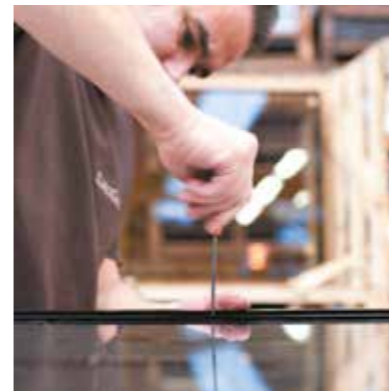
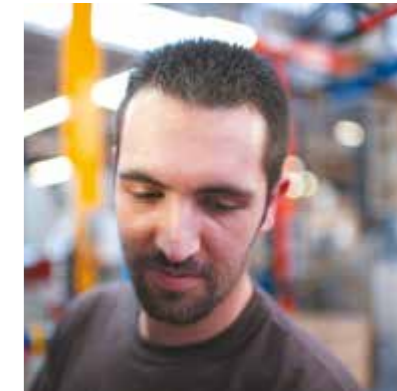


The relationship between winemaker, sommelier and oenologist is essential to create a great wine.

That is why we work alongside expert sommeliers who help us produce the very best wine maturing, storage and serving products for your enjoyment.

...
*that we respect by
manufacturing
our products
in France.*

The production of wine cabinets and cellar conditioners requires technical expertise and human skills.



BVCert. 6010761

The employees in our French plants, located in Fourmies, in the Nord *département*, and in Chavanoz, in the Isère *département*, are proud to work for a company that has earned the "Origine France Garantie" label for its wine cabinets and cellar conditioners. The label promotes "made in France" products and defends France's industry and know-how. It is a guarantee of quality and reliability for consumers in France and abroad.



*Experience,
expertise and
precision at the
service of time
management*



1976, creator of the wine cabinet
300,000 customers around the world
30,000,000 bottles stored
40 years of experience
1 single brand... EuroCave

Our integrated research department works tirelessly with the aim of dreaming up and designing cutting-edge designer products.

Our core commitment is to preserve the very nature of wine.

Protecting wine from light,
Offering a constant temperature for maturing wine,
Ensuring the ongoing circulation of fresh air,
Preserving wine thanks to stable humidity levels,
Eliminating vibration and providing wine with the serenity it needs to mature.





*Because
EuroCave is an
environmentally
responsible
brand*

We always endeavour to take the environment into account, with energy-saving wine cabinets, low-energy components, wood from approved plantations, and fluids respecting the ozone layer.



An
**international
network of
experts *at your
service***

Meeting the expectations of the most demanding wine lovers and professionals - being present everywhere to interface between winemakers, discerning customers and restaurant owners - and guaranteeing the quality of our products: these are the promises we keep on a daily basis all over the world, thanks to our 70 distributors.

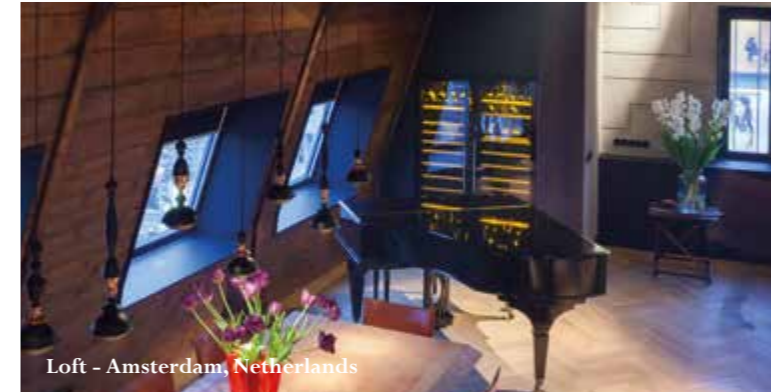
When one of our cabinets travels to the other side of the world, in order to preserve outstanding vintages, the terms of performance and durability must be perfect. The relationship between a EuroCave cabinet and its owner will last some 25 to 30 years... not dissimilar to the lasting passion that one may share with a fine wine.



Railway Club Hotel - Melbourne, Australia



Cabotte - London, United Kingdom



Loft - Amsterdam, Netherlands



Hotel Castille - Paris, France

Some references


Le Royal Hotel (Amman) • Restaurant De Kas (Amsterdam) • Rizzi (Baden-Baden) • Osteria Della Brughiera (Bergamo) • Hotel Adlon (Berlin) • Le Quatrième Mur (Bordeaux) • Hôtel Five Seas (Cannes) • Armani Hotel - Burj Khalifa tower (Dubai) • Burj Al Arab Hotel - Jumeirah group (Dubai) • InterContinental Hotel (Dublin) • Shelbourne Hotel Marriott (Dublin) • Les Bergues (Genève) • Olden Hotel (Gstaad) • Klaus K Hotel (Helsinki) • Ritz-Carlton (Hong Kong) • Lotte Hotel (Jeju Island) • Mount Juliet (Kilkenny) • Skuaergaren Hotel (Langesund) • Dunraven Arms (Limerick) • Four Seasons (Limassol) • Carlton Palace Hotel (Lisbon) • The Square Restaurant (London) • Hilton Hotel (London) • Grand Hotel (Lund) • Institut Paul Bocuse (Lyon) • Sofitel (Lyon) • Le Grand Casino La Mamounia (Marrakech) • Le Louis XV (Monaco) • Hotel Bayerischer Hof (Munich) • Castillo de Gorraiz (Navarra) • Marriott Associa Hotel (Nagoya) • Hôtel Palafitte (Neuchâtel) • Hôtel Negresco (Nice) • Bristol Hotel (Oslo) • Scandic Hotel (Oulu) • La Reserva de Rotana Hotel (Majorca) • Holiday Inn Notre Dame de Paris (Paris) • Hôtel de Crillon (Paris) • Le Lido (Paris) • Le Ritz (Paris) • Palais de l'Elysée (Paris) • Royal Monceau (Paris) • The Peninsula (Paris) • Shangri-La (Paris) • Galeries Lafayette Gourmet (Paris) • Plaza Athénée (Paris) • Le Grand Restaurant Jean-François Piège (Paris) • Mandarin Oriental Paris (Paris) • Restaurants Bernard Loiseau (Paris, Dijon, Beaune, Saulieu) • Ladurée (Paris) • Fauchon (Paris) • The Brando (Polynésie Française) • Restaurante Casa Velha (Quinta do Lago/Algarve) • Copacabana Palace (Rio de Janeiro) • Le Meridien (Rio de Janeiro) • Sofitel Rio (Rio de Janeiro) • Troisgros (Ouches) • Hotel Excelsior (Roma) • Restaurant Parkheuvel (Rotterdam) • Maksoud Plaza (São Paulo) • Hilton Hotel (Seoul) • Maia Luxury Resort (Seychelles) • Caves de St-Emilion (St-Emilion) • La cave de Bacchus (St Martin) • Restaurant Arnold's (Stockholm) • Sheraton Hotel (Tel Aviv) • The Norman hotel (Tel Aviv) • Groupe Georges Blanc (Vonnas) • Villa Park Wesola (Warsaw) • Yokohama Bay Sheraton Hotel & Towers (Yokohama) • Baur au Lac (Zurich) • Club Med 4 & 5 tridents villages (all around the world!)



*All of our
product
ranges*



Our wine cabinets
*
Our “Wine Tasting” range
*
Our cellar layouts
*
Our Cigar Humidor

A modern kitchen and dining area featuring a wine cabinet. The wine cabinet is a tall, silver, freestanding unit with a glass door, filled with wine bottles. It is positioned against a brick wall. To the left, there are light-colored wooden cabinets with a white countertop. On the countertop, there are stacks of white plates and several bottles. To the right, there is a dining table with a white top and wooden legs, surrounded by wooden chairs with black seats. The room has large windows with black frames, and a black pendant lamp hangs over the table. The overall aesthetic is modern and industrial, with a mix of brick, wood, and metal.

*Our wine
cabinets*



Tête
à Tête

*
*A wine cabinet for
serving wines*

*
*A vacuum system for
preserving two open
bottles*

*
*An unrivalled
design*



With its understated design and clean lines, Tête à Tête is a wine cabinet with an urban, modern look.

Tête à Tête allows you to set the desired serving temperature so your finest bottles are always ready to drink.


Thanks to its vacuum system, 2 open wine bottles can be preserved for up to 10 days*.

*depending on the wine and its vintage



A photograph of a wine cellar. In the center is a tall, black wine refrigerator with a silver frame and a glass door, filled with wine bottles on wooden shelves. To the left is a bar counter with a glass door. In the background, there are shelves with various bottles and glasses. The lighting is warm and focused on the wine refrigerator.

Première

A close-up photograph of the wine refrigerator's control panel. The panel is digital and ergonomic, featuring a small display and several buttons. It is mounted on a dark wall. A framed picture is visible on the wall above the panel, and the back of a brown armchair is in the foreground.

Medium-sized model - Glass door, silver frame

*
*A range for maturing
wines*

*
*A digital, ergonomic
and user-friendly
control panel*

*
*A customisable
design*



Small model - Solid door, black frame



Large model - Solid door, black frame



Discover the reading light, a detachable lamp built into the cabinet, which will make it easier for you to read your bottles.

No visible handle!
The handle is completely concealed in the side of the door, for a cabinet with a contemporary finish.

Trendy colours...
deep black, red passion, silver satin.
The details are neat and play with the
textures and materials.



Large model - Glass door, red frame



Large model - Glass door, black frame

Pure

*

*A range of maturing,
multi-purpose and
serving cabinets*

*

Elegant finishes

*

Subtle lighting



Large model - Black Piano door



Small model - Full glass door





Large model - Full glass door

Wine cabinets designed and devised, down to the last detail, to store your bottles in the best possible conditions, reduce energy consumption and care for the environment.



Large model - Full glass door

Revelation

*

*A range for maturing
and serving wine*

*

Luxury finishes

*

Multiple configurations



“ Delicate
gestures reveal
delicate emotions „

African proverb



Large model - Full glass door



Small model - Full glass door

Noble, refined, environmentally-friendly.



Collection

Medium-sized model - Full glass door

*
*A range of maturing,
multi-purpose and
serving cabinets*

*
*The elegance of wood
and the modernity
of colour*

*
*25 possible panel
combinations*



The cabinets in the Collection range vary between graphic lines, bright or muted colours, wood finishes and lighting effects.



Large model - Black Piano door



Large model - Black Piano door



Small model - Full glass door

With twenty-five possible combinations, the Collection range adapts to its environment, blends into its setting, or else takes centre stage in its room.



Compact

Small model - Full glass door*

* Door type depends of geographical area

*
*A range for
maturing and serving
wine*

*
*Perfectly integrated
flush-fitting cabinets*

*
*Sizes that
adapt to your space
requirements*

In the flush-fitting version, they fit perfectly into your kitchen, since their dimensions have been determined by kitchen specialists.

In the free-standing version, these cabinets fit into very small spaces.

* Door type depends of geographical area



Large model - Full glass door*



*Small model - Solid door**

*Door type depends of geographical area



Small model - Technical door



Inspiration

*
*A wine maturing and
serving range*

*
*Flush-fitting or built-in
cabinets*

*
*A design with clean
lines*

Size L technical glass door



Size S full glass door



Size M stainless steel and glass door

The heart of the home, the kitchen is no longer reserved just for cooking. A place to gather and spend time together, it is open to all the family and often friends too.

Which is why wine lovers often choose to store their best bottles there. Because shared moments, around a table or a bar, are usually the perfect time for enjoying a glass of wine.

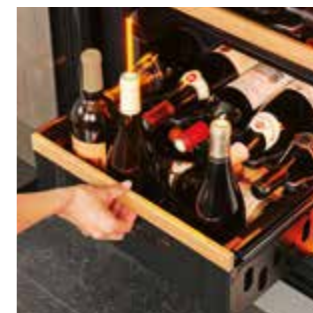
For all these reasons, we created Inspiration.



Size L technical glass door



Size XS full glass door



Clean lines, ergonomic curves...

Inspiration's design was devised to be timeless, perfectly complement your kitchen and provide unprecedented ease of use.



*
A unique cabinet

*
*Enhances and showcases
the finest vintages*

*
*Flush-fitting and offers
a customisable
design*

ShowCave



Tel Aviv, Israel



More than a simple wine cabinet solution, ShowCave lends character to your interior. A true decorative element, ShowCave creates a unique ambiance.



Colour Red Earth

Royale

*

*The best wine cabinet
in the World*

*

*A wine maturing cabinet
with unrivalled
performance*

*

10-year warranty



Why *Royale*?

Quite simply because it represents the best we can offer our customers in terms of performance, durability and aesthetics.





Colour Mineral Grey



Colour Red Earth



After three years of research and collaboration with all of the marketing, manufacturing, engineering and design teams,

After three years of analysis in close collaboration with high-tech laboratories,

After three years of very exciting work,

We have reached a level of unprecedented performance and expertise.

Today, we are proud to say that we have succeeded in channelling all of our wine maturing know-how and expertise into designing an exceptional wine cabinet, **Royale**.





Elite

*
A range of wine units

*
*Seven different layouts
and a wide choice of
finishes in beech or oak*

*
*A Bar unit reserved
for glasses and spirits*



Precious
cladding



*
*Precious materials
to customise your cabinet*

*
*Leather cladding made
by craftsmen specialising
in furniture lining*

*
*Stainless steel cladding
offering a resolutely
modern design*



Interior layout

**
Organise, store or display*

**
Freedom to choose between sliding, storage, display or tasting shelves*

**
Making it easier for you to store and reach your bottles*

Our
“WineTasting,”
range



Wine Art



*
A clever concept

*
Preserves open bottles

*
*Brings wine to the ideal
serving temperature*



This small wine bar with its smooth, timeless design allows you to store two open wine bottles for up to 10 days* and bring them each - depending on their colour (red, white or rosé) - to the ideal serving temperature.

The effectiveness of Wine Art has been scientifically proven by the Cellule d'Expertise Scientifique En Œnologie (Scientific Expertise in Oenology Unit, CESEO) of the Institut Universitaire de la Vigne et du Vin (University Institute of Vine and Wine, Dijon, France).

*depending on the wine and its vintage





*Our
cellar layouts*

*

*A simple, modular
storage system*

*

*A folding rack
made from solid beech*

*

*To store all types of
bottles*

Modulo | cube





Modulo | rack

*

A solution for storing wine cases

*

An exclusive sliding shelf system

*

Easy access to bottles

*

*Storage with clean,
modern lines*

*

*A strong and stable
steel structure*

*

*Bottles in “storage”,
“presentation” mode or
in their original cases*

Modulo | steel





Modulo | thèque

*

*Storage modules in
solid oak, a noble,
resistant wood*

*

*Modular units beautifully
crafted with a variety
of functions.*

*

*Can adapt to the
requirements of the room
(sloping ceiling, corner of a room,
vaulted walls)*

*
A wine cellar conditioner

*
*Simple and easy
to maintain*

*
*To control the
temperature and humidity
of your wine cellar*



Inoa



*Our Cigar
Humidor*



Cigar Humidor

*

*The only solution for
preserving all of your
precious cigars over any
length of time.*

*

*A unique humidity and
temperature automatic
control system*

*

*A wide selection of
finishes*



*Our services
that make your
life easier*

**
International
After-Sales Service*

**
Product guarantee*

**
3D software to design the
environment of
your future wine cabinet*

**
The EuroCave application,
a virtual wine cellar book*



A genuine virtual wine cellar book...

To support you even more in your passion for wine, EuroCave has developed an application for you.

This virtual wine cellar book provides you with an easy way to manage your wine cabinet or cellar!

From your mobile phone or tablet, list all your bottles, create wine information sheets, organise your cabinet, keep a record of all the wines you have drunk, be alerted when your wines have reached their peak, share your favourite wines with your friends, receive professional advice about your wine collection, or print out your cellar board.

The application is available in 8 languages: English, French, German, Dutch, Russian, simplified Chinese, traditional Chinese and Japanese.



A 3D software programme for better planning

Thanks to the EuroCave 3D software programme available from some of your distributors, you can undertake a customised simulation of the location of your future wine cabinet in your home and design its interior layout.

Contact the distributor located closest to you.

